

Post holder Statement – Operational Lead East (Woodend and Bell Green)

August 2022

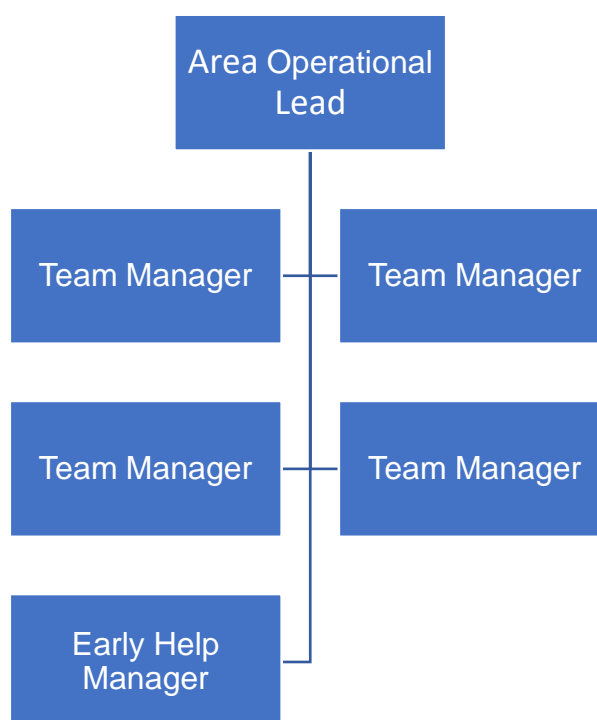
Scope

The post holder is responsible for the management and delivery of the following services

- City Council children's child in need & child protection social work teams
- City Council Family Hub teams & early help services

The services are located within the Childrens Help & Protection service and the post holder is a leader of the area management team and a member of the Help & Protection Service Leadership Team and the Children's Services Extended Leadership Team.

Direct Reports



Activity

The Operational Lead is responsible and accountable for the operational performance of the services listed above through line management, performance management and quality assurance arrangements.

Ensuring the effectiveness of early help support to children, young people, parents, carers and families in their family and community life to enable them to maximise participation in family and social life and achieve their life chances.

Ensuring the effectiveness of agency and partner early help support to children in need in reducing the incidence of harm and the need for referral to children's social care and enabling disabled children and families to access dedicated support to maximise

their well-being. Performance measures include: CAF activity & quality, including partner's contributions, vulnerable population health, and education & employment outcomes, reduction of children re-referred to the children social care services. Through effective intervention, including Children Act applications as part of Public Law Outline activity, ensure children come into care in proportionate and timely way and support alternative permanent care arrangements.

Ensuring the effective delivery of social work assessment, interventions and case work. Performance measures include: the timeliness of safeguarding interventions and quality of assessments, plans and progress towards safety and the reduction of children receiving repeat child protection interventions.

Ensuring the effectiveness of support to children, young people, parents, carers and families, to include disabled children, in their family and community life and to enable them to maximise and achieve their life chances.

Lead, plan, allocate and control designated budgets in accordance with financial procedures, ensuring the optimum use of available funding and the achievement of value for money.

Overseeing and assuring improvement and change actions in relation to the services own business targets and to achieve the Improvement Plan outcomes. Assuring that the quality of supervision ensures safe case decisions and the expected progress of plans and actions to achieve planned or contingent outcomes.

Roles

Leading collaborative arrangements with Police, schools and health services to deliver joint effective & safe joint 'working together' safeguarding arrangements to reduce the incidence and effect of harm on children & young people.

On behalf of the Strategic Lead, supporting and enabling CSCB partnership working to reduce reducing the incidence and effect of child sexual abuse harm.

Working within the Councils Connecting Communities initiative to better align or connect services and community organisations to improve early help outcomes & to support children, young people, parents and carers to help themselves.

