



Blue Coat
Church of England School
& Music College



Candidate Information Pack

Blue Coat Church of England School & Music College

About Blue Coat Church of England School & Music College

Blue Coat Church of England School and Music College is a vibrant and inclusive large comprehensive school in the heart of Coventry. Blue Coat is a Church of England School and this identity is of great significance to us. Our vision is about 'living life in all its fullness' and we aim to provide excellent education which is distinctively Christian yet inclusive of all.

At Blue Coat we place high importance on developing the whole individual: academically, socially and spiritually. At the heart of the school lie our Values: Care, Hard Work, Respect, Integrity, Servanthood and Togetherness. Through these Values our whole school community can grow together and live life in all its fullness.



About Inspire Education Trust

Inspire Education Trust is a Multi Academy Trust of Schools that grew from a shared belief that children deserve a first-class education so that each individual pupil understands what they are capable of, what talents they have, and strives for excellence in themselves in order to succeed in the next stage of their education and the world of work.

We understand that every member of staff is here for the best interest of those pupils. We want to ensure that everyone is valued and that the unique identity of each school is protected, celebrated and recognised for the contribution it makes to ensuring children have the best education and experiences.

Our name "Inspire Education Trust" symbolically reflects the beating heart of our Multi-Academy Trust. Our Trust is a community of schools that have shared values and share an essential common ethos and vision for education and learning, as encapsulated in our values.



These values drive our behaviours, decision making and ambitions:

- To be inclusive
- Being self-reflective is essential in encouraging innovation, our Trust is always driven to improve further
- We value strong clear moral purposed leadership
- We are committed to making all children feel happy, safe and secure.
- We believe that all our children are of equal value regardless of their differences and celebrate diversity of our school community.
- We celebrate our national culture and traditions and encourage the children from other cultures to teach us about theirs.

'In all schools across the Trust we show respect towards those of other faiths and beliefs. The Christian faith is also central to the life and work of our Church of England Schools'

In our school communities, we aim to create an atmosphere of trust and understanding in which the sanctity of the individual is cherished and where the children and adults show consideration, courtesy and respect for each other at all times.



Blue Coat
Church of England School
& Music College



Clifford Bridge
Academy



Hearsall
Community Academy



Stockingford
Academy



Walsgrave
Church of England Academy



Whittle
Academy

'Inspire is the Employer and Educator of choice.'

Through a first class education you will discover who you are, learn to flourish and live life in all its fullness.



Blue Coat Theatre

Over the last decade, Blue Coat has developed an outstanding reputation for producing highly professional theatre and musical events, this is a true reflection of the time and dedication given by staff and students alike.

There are lots of opportunities for staff and students to be involved in the performing arts at Blue Coat and we are extremely lucky to have great facilities for rehearsals and performances with Blue Coat Theatre providing a fantastic venue.



Learning Resource Centre

The Learning Resource Centre is a large part of the Blue Coat School. It is open to staff and students all day from Monday-Friday for information literacy lessons, accelerated reading lessons, curriculum subject lessons and during social times.

Every Friday we receive a visit from Maisy the dog. Maisy loves to meet staff and students, relieving our every day stresses and putting smiles on our faces!



Our Christian Distinctiveness

The Chaplaincy suite is a vibrant and well used place within the heart of the school, used by students, staff, visitors and families.

There are two rooms – a quieter room equipped with drink making facilities, computer and speakers, comfy sofa and chairs where staff and students can meet with the Chaplain.

The second room is a multi-purpose space with chairs, beanbags, and prayer space activities. This is used at break and lunchtimes for groups to come and socialise. Throughout the year this space is also used for dedicated prayer.



Employee Benefits

Staff are able to access a comprehensive offering of benefits including a range of discounts for retail and shopping, gym membership, travel, cinema and electronics to name a few.



Staff Wellbeing

We are committed to staff wellbeing and have set out an ambitious wellbeing strategy so that all staff can bring their best self to work each and every day. To help us achieve our aims we have set up a network of wellbeing champions as well as a strategic wellbeing committee who focus on addressing the issues which effect us the most.

All staff can access our Employee Assistance Programme which offers the following:

- Professional counselling, information and advice offering support for issues arising at home or work.
- Provides an opportunity to discuss problems away from the workplace independent of the situation
- Up to six sessions of counselling for all staff at no cost
- Access to counsellors or information specialists via telephone (24/7) or online



Continuing Professional Development and Training

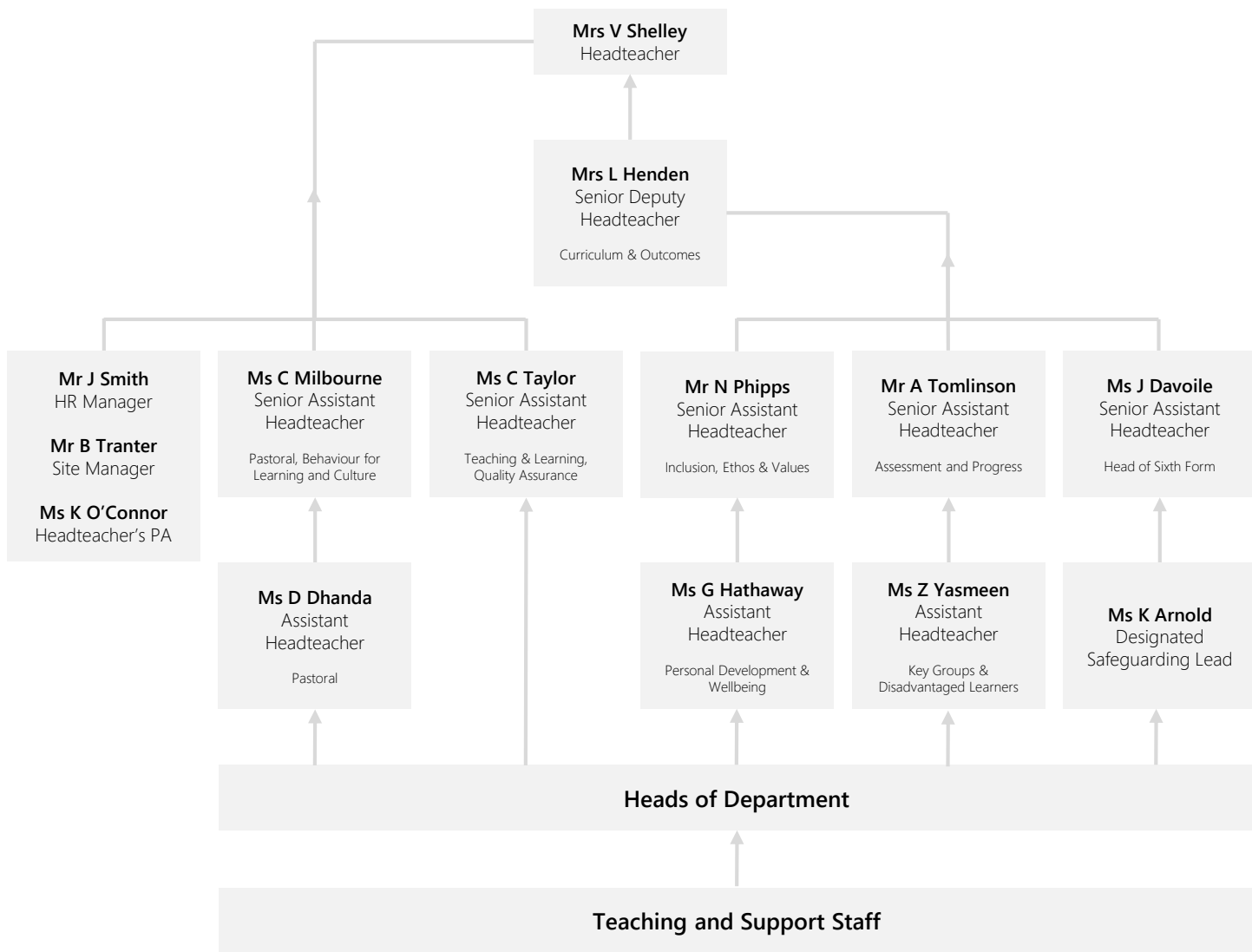
Our people are key in ensuring we can achieve our ambitions aims as an organisation. You can expect a range of comprehensive training and development, regardless of your role in school, whether a teacher, administrative officer or aspiring leader.



Inclusive Culture

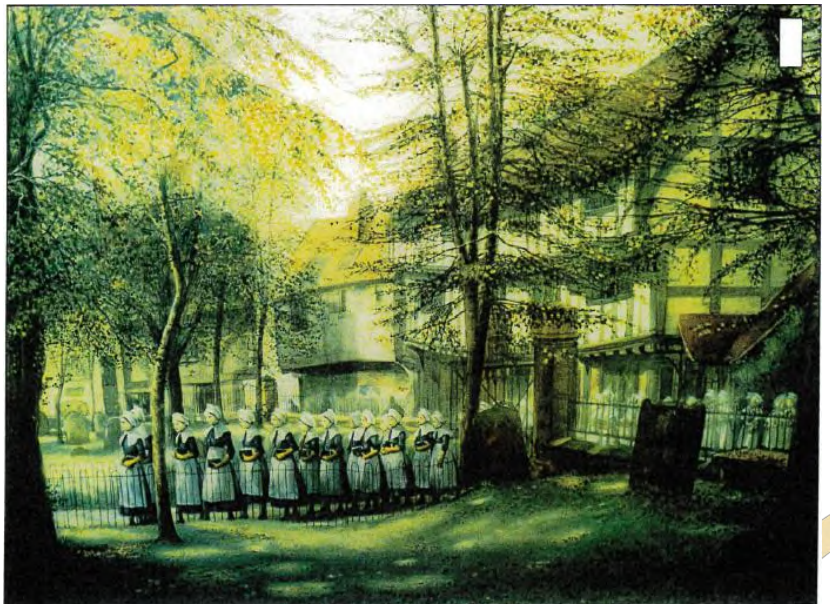
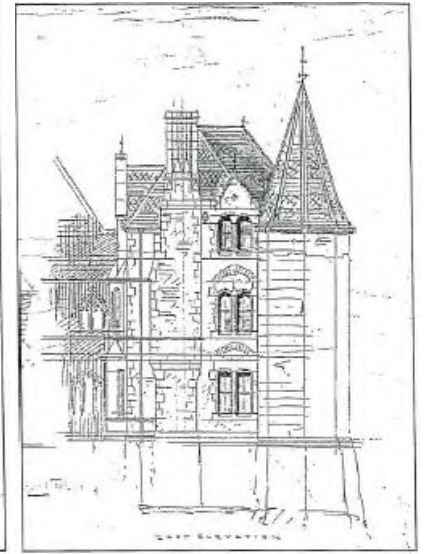
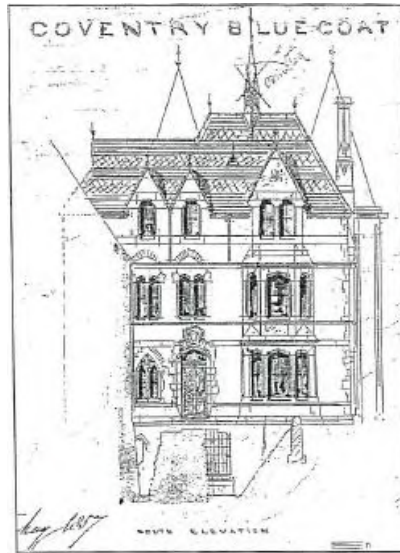
We are proud to be working towards the Gold Equalities Award. This is in line with our commitment to inclusivity, equality and diversity for all staff, students, parents and others within the community. We welcome and celebrate individuals from all walks of life regardless of their nationality, ethnicity and heritage, LGBTQ+ identity, gender, sex, disability, religion or belief.

Senior Leadership Structure






History of Blue Coat School

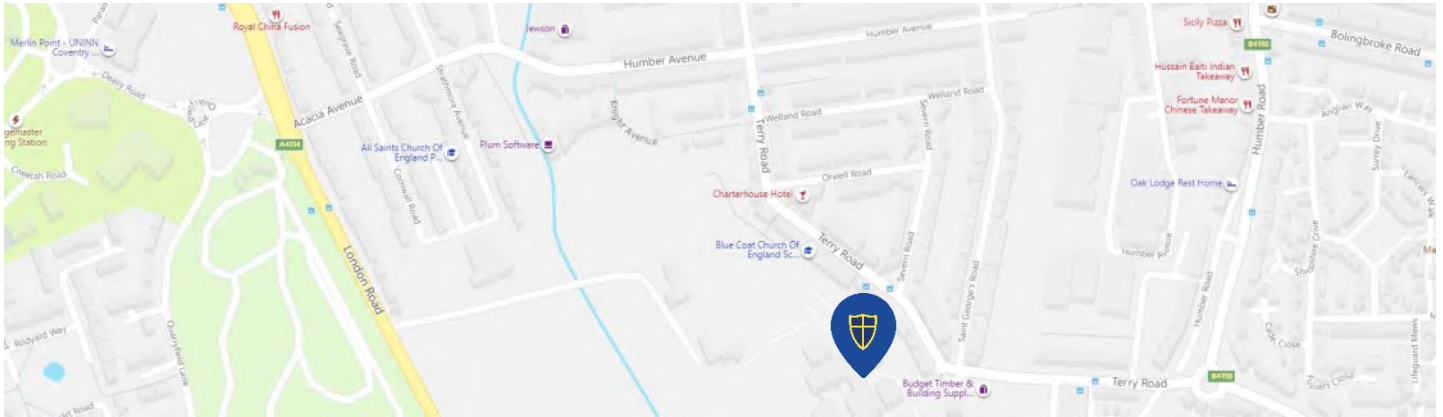
Blue Coat has a rich history stretching back over 300 years to 1714, when it was founded near Holy Trinity Church as a girls' school with a mission to provide opportunities for all students. The current site has been open since 1964, but the desire to bring quality education to all remains. In April 2020 Blue Coat became a member of the Inspire Education Trust, and this family of schools recognise that 'Through a first-class education you will discover who you are, learn to flourish and live life in all its fullness'.



How to find us

Transport Timings from Coventry City Centre to Blue Coat School, Coventry

 14min  23min  7min



Blue Coat School has secure onsite parking provision for Staff and Visitors.

Contact Us



02476 223 542



recruitment@bluecoatschool.com
schooloffice@bluecoatschool.com



www.bluecoatschool.com



@BlueCoatCofE



Blue Coat CE School



Blue Coat Church of England School & Music College
Terry Road
Coventry
CV1 2BA



HR & Recruitment Administrator | Cara Hooper
HR Manager | Josh Smith

Recruitment Privacy Notice

Inspire Education Trust



Who is collecting your data?

Inspire Education Trust is a data controller for the purposes of the General Data Protection Regulation and domestic legislation. The personal data that you provide will be used in connection with your application for vacancies at the School only. If we make an offer of employment, the School will provide a fully informed privacy notice to employees.

Why are we collecting your data?

- So we can process your application to the next stage
- Check and verify your identity
- Ensure your suitability for the position advertised including contacting references from your noted referees, provided you have confirmed their consent to be contacted for this purpose
- For research, analysis and statistical purposes
- Meet our statutory obligations under the Equality Act 2010

What is being collected?

The information you provide us with in this form is collected to enable us to consider your suitability for the vacancy. This includes:

- Name and contacts details (phone number, email, address)
- Previous work history and experience
- Education, training and qualifications
- Referee contact details

We also process special category data such as:

- Religion
- Ethnicity
- Disability Issues

We ensure we keep our records up to date by logging these on the TES platform in which you made your application. If you are successful in your application, we will provide you with further details about how we will process your personal data.

Do we share your data?

Information on this application form and notes made during the interview process are not shared if an offer of employment is not made. If an application is successful, a workforce privacy notice will be provided to you, detailing how we will use your personal data.

Your Rights.

You can see your rights in relation to the application by visiting <https://ico.org.uk/your-data-matters>.

Retention

Unsuccessful candidates' application forms will be destroyed after 6 months.

Successful applicants will be provided with a fully informed employee privacy notice alongside their contract. The information provided on this form will be stored with the successful applicant's personnel file. This is kept in line with the School's record retention schedule. This can be found on the School website.

